

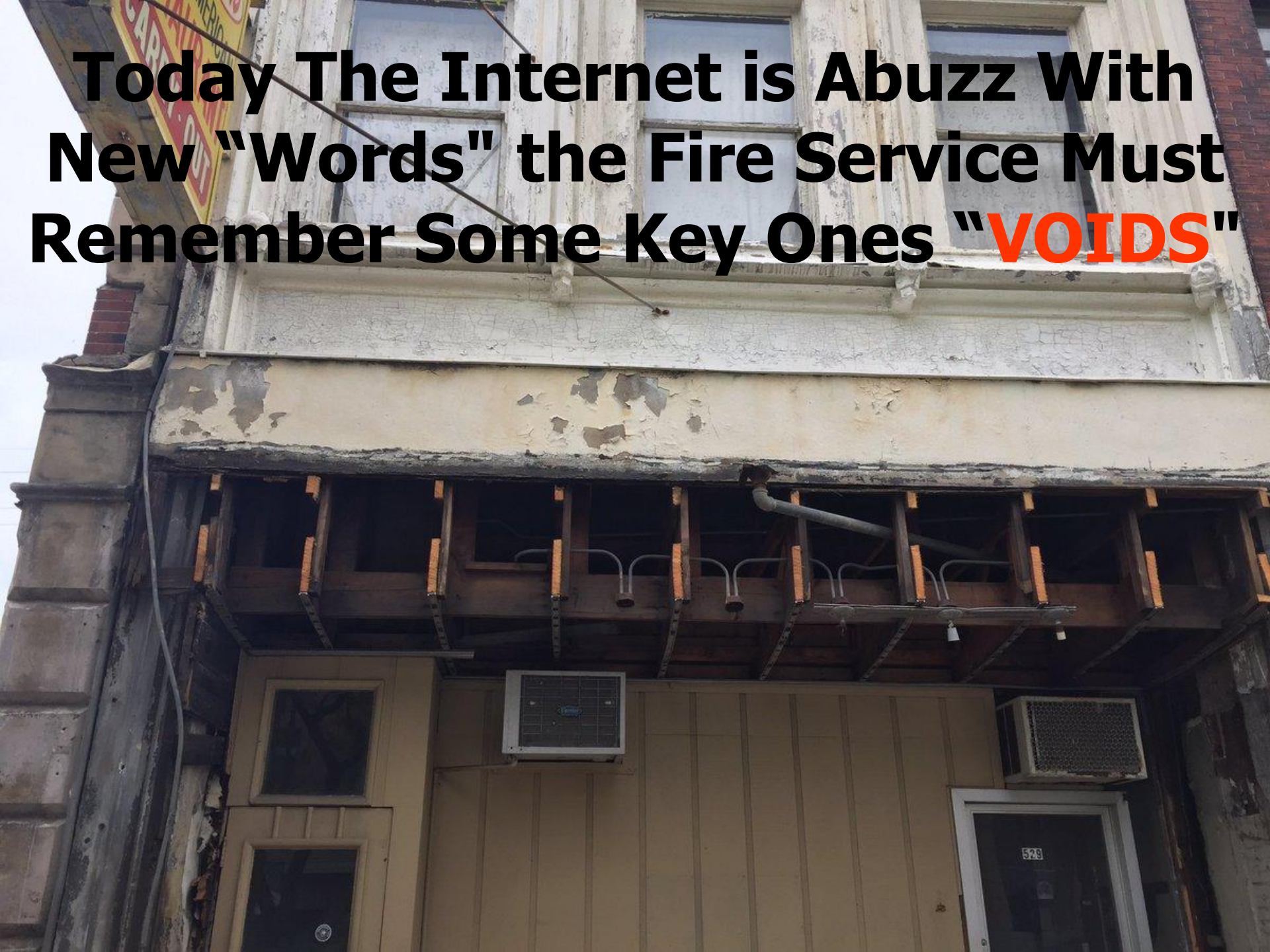
JUNE 2017 FIRE NOTES

The CONTROL FF...A Very Important Position of your Highrise Attack Team.

- Critical to know:
 - Difference between static and flow pressure.
 - Outlet flow pressure needed for how many lengths of hose/nozzle type accounting for floor below hook up.
 - Presence of a PRV and how to overcome if possible/needed.
 - Procedures for shutting down in the event of pinched hose line or clog.



Today The Internet is Abuzz With
New "Words" the Fire Service Must
Remember Some Key Ones **"VOIDS"**



- **Do What's Right For Your Crew.**
- **Be An Active Officer In Your Organization.**
- **Lead. By. Example!**

The gold letters on your shirt only make you look like an officer. It's your actions that define you as one.

-Trial by Fire



LEADERSHIP FAILURE

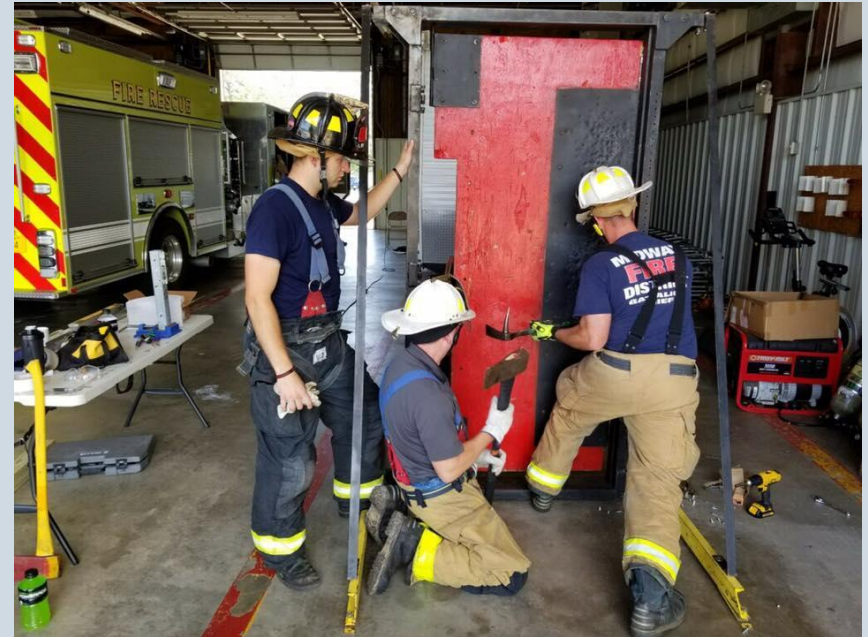
- **Lack of Passion.**
 - **Unclear Vision.**
 - **Poor Communication Skills.**
 - **Risk Aversion.**
 - **Callous.**
 - **Unethical.**
 - **Poor Self-Management.**
 - **Incompetence.**
 - **Plays the Victim.**
 - **Tears Others Down.**
 - **Micromanager.**
 - **First to Take the Credit.**
 - **Last to Take the Blame.**
- When Someone in an Authoritative Position Displays Poor Leadership Traits, the Mission that Person is Trying to Accomplish is Doomed to Fail. A Officer will NEVER Earn the Respect of His Crew Unless He Develops the Qualities that Align with Those of Great Leaders.

5 Principles to Influencing

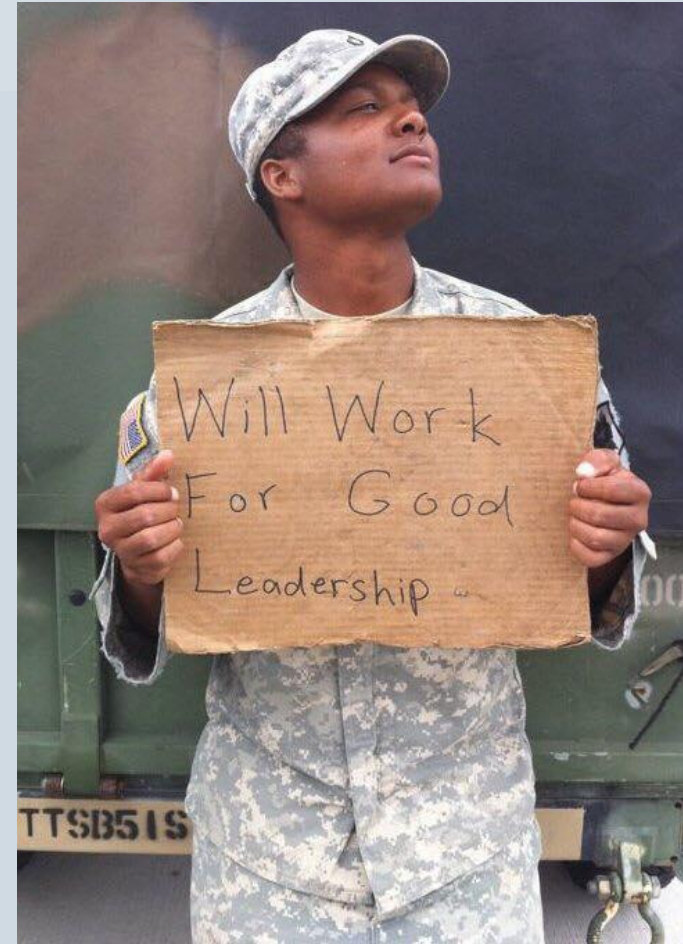
- **Be Likable**
- **Display the Behavior**
- **Engage Peers**
- **Be Consistent**
- **Develop Expertise**

COMPANY OFFICERS NEED TO *LEAD FROM THE FRONT*

- Be the first to be willing to learn from others (even a JR to man).
- Be the first to get in there and swing the tool.
- Be the first to lead by example.
- Its SIMPLE. Be vulnerable at times...It shows your human...
- ...it's not that hard. DROP your EGO, you don't know it all.



- Put in the work for them, and they will put in the work for you.
- Ever wonder why you can't get results and buy in from your people? Maybe it's time to look in the mirror and ask yourself some questions.
- Demonstrate leadership that shows value and commitment.



Tips For The Exposure Building

- Have a Line & TIC
- Close the Window
- Remove Curtains
- Pull Back Carpet
- Spot Overhaul Ceiling and Baseboard.





Hose Stretch Bill Of "Rights"

1. Right Size & Length Of Hose

2. Right Nozzle

3. Right GPM

4. Right Number of Members

**5. Water Right On The Seat Of
The Fire**

